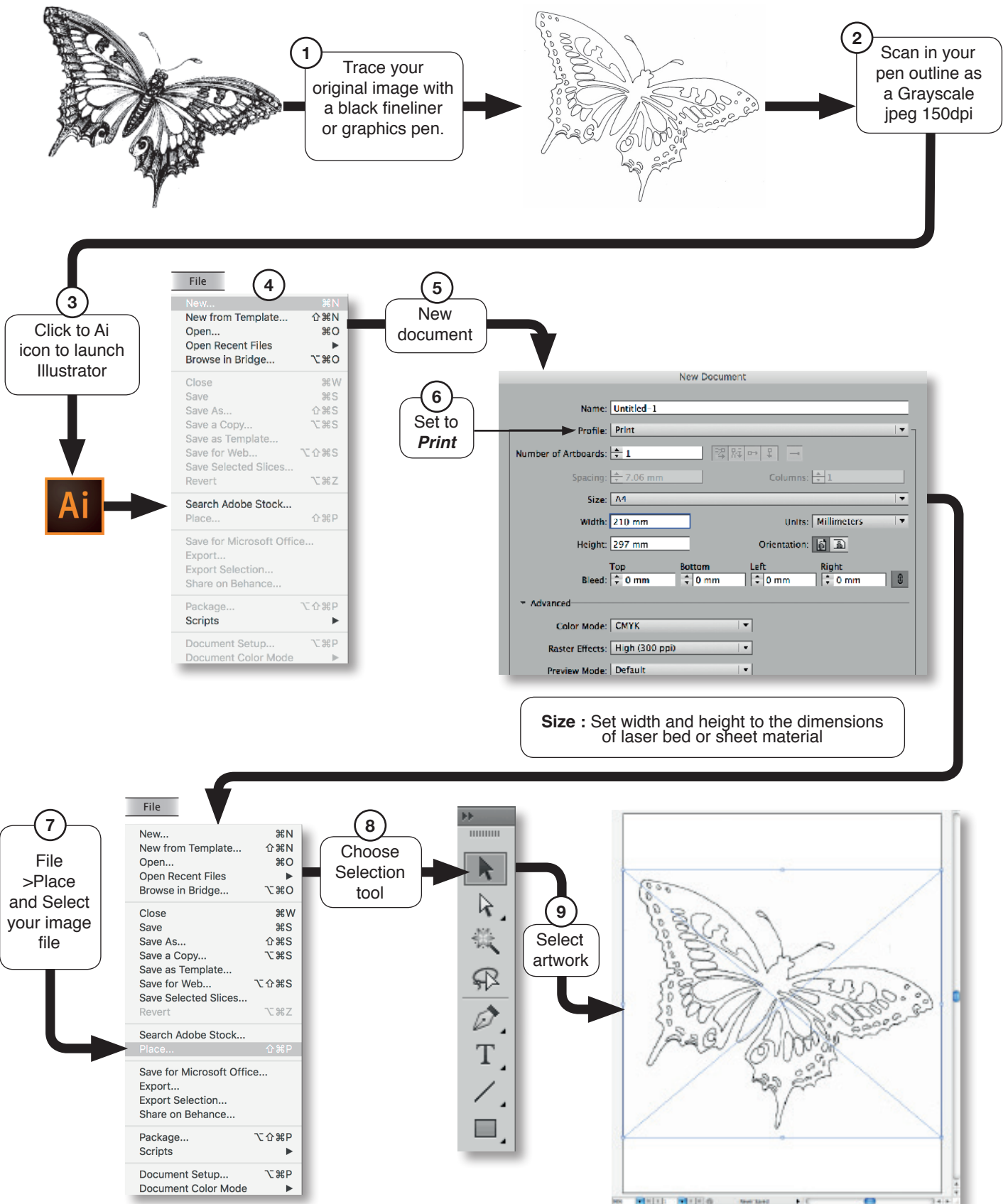


This is a step by step guide describing the simplest process for creating an Illustrator file suitable for laser cutting from a hand drawn image. You do not have to have any experience of Illustrator to use this handout. For text or geometric designs it is best to draw them in Illustrator and not use the method described by this handout.



10 Click on ImageTrace

Detail of image showing pixelation



11 Click Tracing Options in the Control Bar

Detail of image showing Live Trace preview. Although there is no pixelation the lines are an uneven thickness.



12 Click Black/White preset icon

If your image has gaps you can use the Threshold to adjust the trace. Move the slider to the right to close gaps and add areas; slider to the left to simplify the trace.

13

**Image Trace**

Preset: Custom

View: Tracing Result

Mode: Black and White

Palette: Limited

Threshold: 128  
Less More

Advanced

Paths: 50%  
Low High

Corners: 75%  
Less More

Noise: 25 px  
1 100

Method:

Create:  Fills  Strokes

Stroke: 10 px

Options:  Snap Curves To Lines

Ignore White

Paths: 440 Colors: 1

Anchors: 4805

Preview

Trace

14 Tick Ignore White

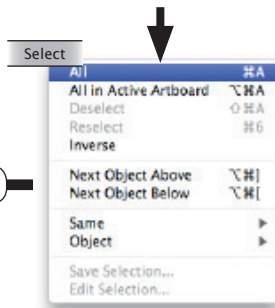
15 Tick Preview

16 Click Trace

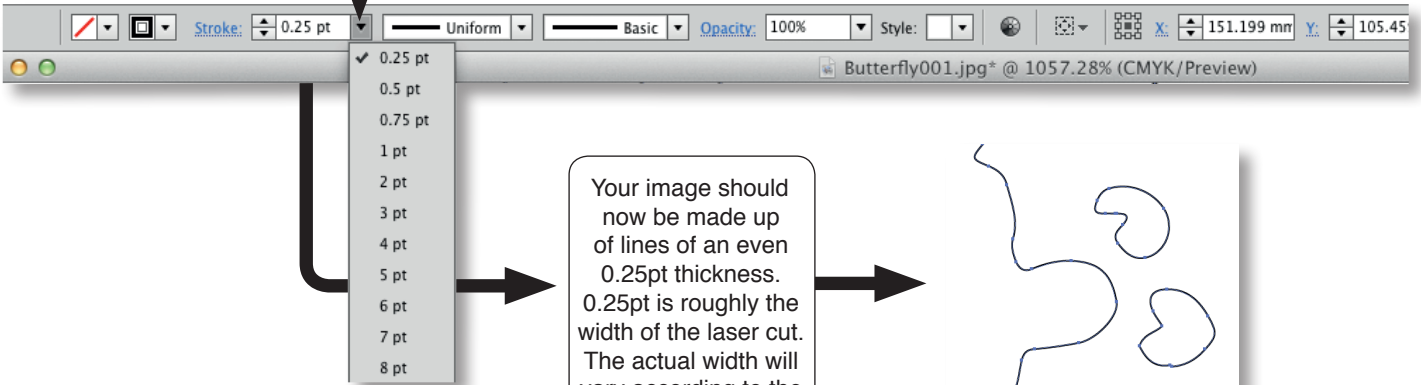
17 Click Expand in the Control Bar



18 Select > All



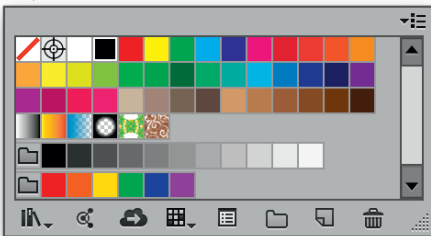
19 Set Stroke to 0.25pt



20 Select > All

21 Object > Compound Path > Release

22 Select Stroke colour



23

Choose a colour from the Swatches panel :

- Black** = Cut
- Green** = Etch
- Blue** = Registration
- Turquoise** = Kiss Cut



To Save please see handout : 'Saving for Laser cutting in Illustrator'