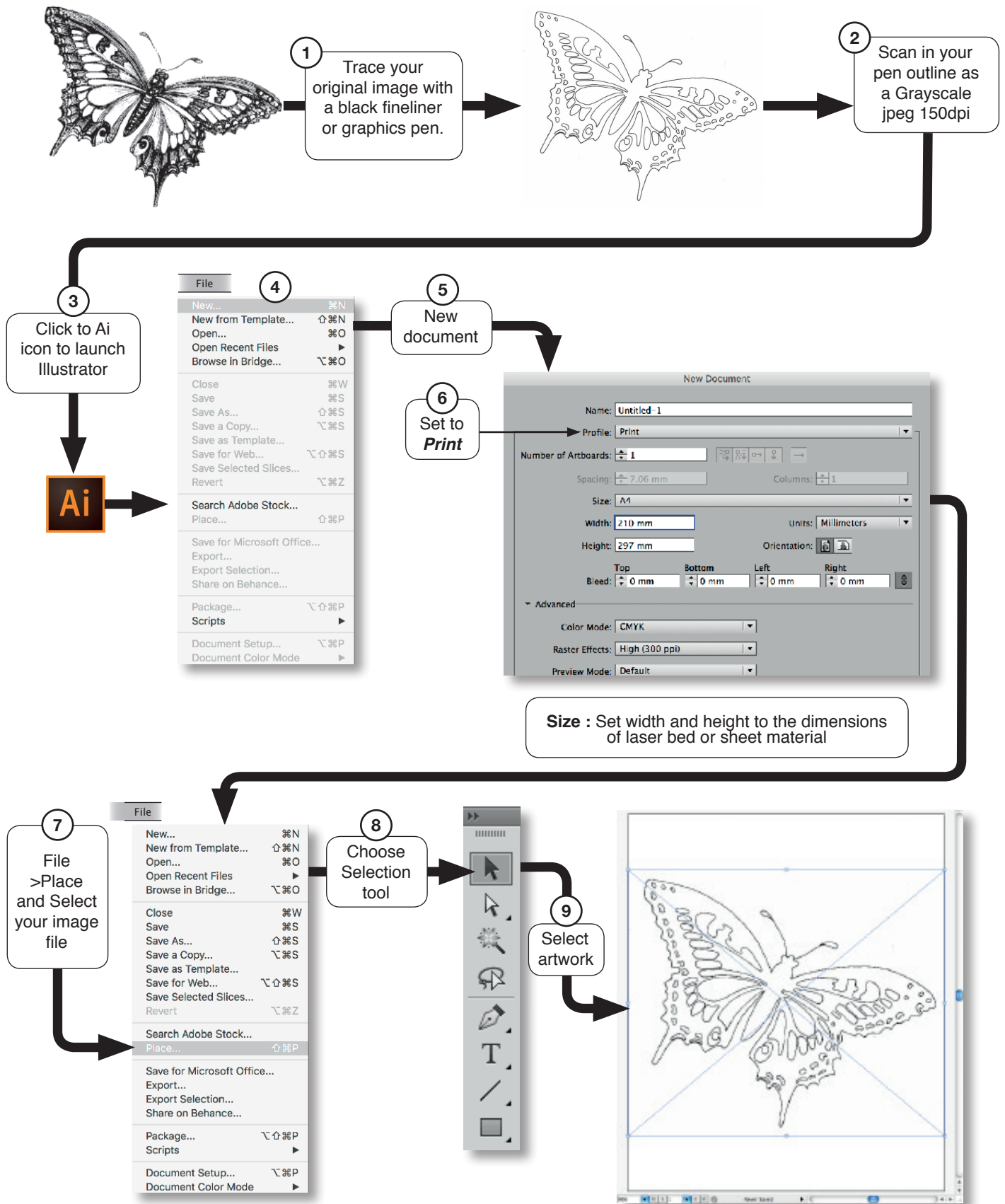


This is a step by step guide describing the simplest process for creating an Illustrator file suitable for laser cutting from a hand drawn image. You do not have to have any experience of Illustrator to use this handout. For text or geometric designs it is best to draw them in Illustrator and not use the method described by this handout.



10 Click on ImageTrace

Detail of image showing pixelation



11 Click Tracing Options in the Control Bar

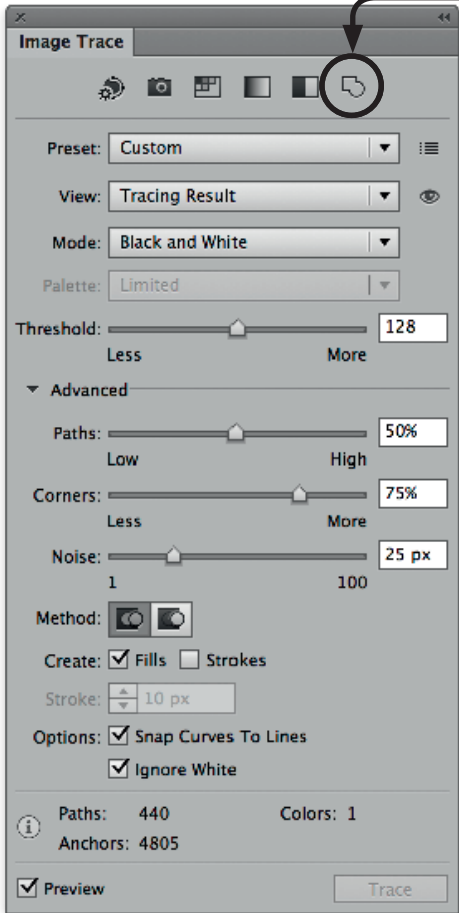
Detail of image showing Live Trace preview. Although there is no pixelation the lines are an uneven thickness.



12 Click Outline preset icon

If your image has gaps you can use the Threshold to adjust the trace. Move the slider to the right to close gaps and add areas; slider to the left to simplify the trace.

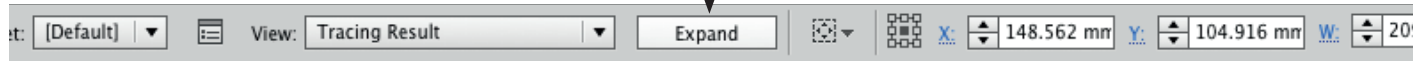
13



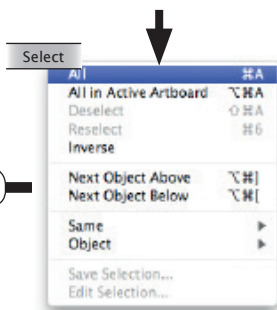
14 Tick Preview

15 Click Trace

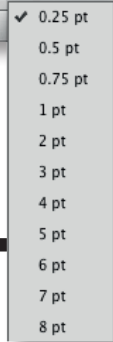
16 Click Expand in the Control Bar



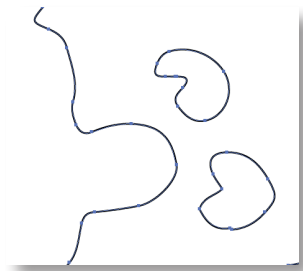
17 Select > All



18 Set Stroke to 0.25pt

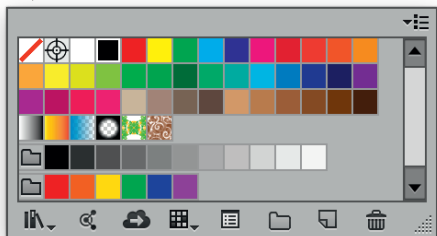


Your image should now be made up of lines of an even 0.25pt thickness. 0.25pt is roughly the width of the laser cut. The actual width will vary according to the material being cut



19 Select > All

20 Select Stroke colour



21 Choose a colour from the Swatches panel :  
**Black** = Cut  
**Green** = Etch  
**Blue** = Registration  
**Turquoise** = Kiss Cut



To Save please see handout : 'Saving for Laser cutting in Illustrator'